

BridgeWorX™

Real-Time Workflow for Data Bridging

Fast and Intuitive Graphical Workflow Designer

Develop transaction workflows using highly intuitive graphical tools. Use the function block graphical designer to connect multiple data sources, define, calculate and implement business rules

Scalable .NET Architecture

Take maximum advantage of the latest .NET technology. Leverage ADO.NET for native data-mining and workflow capabilities

Data Mine Any Real-time Data Source

Utilize a large collection of function block data connectors to data mine data sources such as Microsoft SQL Server, Oracle, SAP, plant historians, OPC and more!

Powerful Transaction Workflow Scheduler

Schedule transactions and workflows based on periodic time and date, OPC tags, Alarms and Events, Database Values, File attributes, and more!

Intuitive Web Interface with Integrated Security

Three tier security access rights integrate with Windows NT or Active Directory for secure access over LANs, WANs and the Internet

Seamlessly Orchestrate Historical Data Integration

Leverage the graphical workflow designer to move ICONICS Hyper Historian data to and from any data source for in-depth analysis of high-speed historical data

Centralized Unified Data Manager

Access and modify all transaction parameters from a centralized location. Configure scheduling triggers and create expressions for reuse in other applications

Real-time OPC Compliance

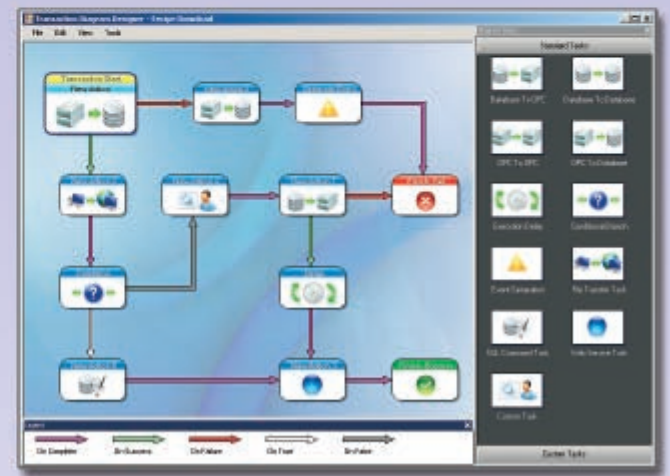
Data-mine OPC data, OPC alarms and events, and historical data in real time

Extensive Web Services Data Integration

Connect to a greater variety of Web services, use custom classes, SOAP headers, arrays, datasets and more!

Custom User Tasks

Create custom transaction and execution blocks using Visual Studio .NET. Use VB .NET or C# to create libraries of BridgeWorX custom function blocks



"Utilize a Graphical Workflow for Manufacturing Intelligence"



2008 ISV/SOFTWARE SOLUTIONS PARTNER OF THE YEAR-WINNER



Visualize Your Enterprise™



BridgeWorX™ Microsoft .net

Enterprise Data Bridging Workflow Software with No Programming

BridgeWorX is one of the key components of the BizViz Suite, performing efficient data exchange to and from any database or data source. Schedule secure transactions with real-time or historical data to support more informed and accurate decision-making across the enterprise.

Advantages of BridgeWorX

A unique visual transaction data-mapping configuration wizard assists in transferring information between real-time OPC manufacturing devices and corporate business information systems. BridgeWorX data-mining technology can access Microsoft SQL Server®, Oracle®, Microsoft Access, SAP® and virtually any real-time or archived manufacturing or business data source. Using the powerful configuration tools, one can schedule transactions based on real-time OPC data, alarms, events, time and date, as well as database or file attributes.

Transaction Blocks Included!

BridgeWorX comes complete with a variety of transaction blocks that can carry out data integration and interface management within automation, MES, and ERP applications, including unique user-defined "logic" and diagram "workflow" definitions.

ICONICS Markets Served

ICONICS has more than 250,000 systems running in over 40,000 plants worldwide. The following industries are benefiting from ICONICS solutions:

- Aerospace & Defense
- Automotive
- Biotechnology
- Building Automation
- Chemical & Petrochemical
- Consumer Packaged Goods
- Financial
- Food & Beverage
- Government
- Machine Builders
- Metals & Mining
- Oil & Gas
- Pharmaceuticals
- Power & Utilities
- Pulp & Paper
- Semiconductors
- Water & Wastewater

For further information call

508-543-8600

or visit our website

www.iconics.com



Visualize Your Enterprise™

Data Management for Manufacturing Intelligence

Looking for a data integration and interface management product that requires no programming? BridgeWorX will automatically exchange data between devices and enterprise systems. Easily create reliable systems for batch management, lot tracking, traceability and more, with no scripting. This user-friendly, easy-to-configure, transaction-based product works with OPC and most databases, such as Microsoft® SQL Server®, Microsoft Access, Oracle, SAP and other ODBC-compliant databases.

Cost Savings and Quick ROI

The unique data-mapping configuration capabilities of BridgeWorX require no coding, resulting in quicker implementation of data transfer and interface management projects. BridgeWorX greatly reduces time-consuming custom programming and associated training costs for those skills. Built-in diagnostic tracing capabilities help track errors to their source for quick problem resolution and faster project startups. BridgeWorX visual transaction maps are intuitive and allow new users to modify systems as needs change without editing reams of custom script, resulting in reduced long-term cost of ownership and faster ROI.

No Custom Programming Required

BridgeWorX provides a complete solution requiring no coding for data extraction from source to optional data manipulation before writing to the target system. BridgeWorX eliminates the need for knowledge of the participating source and destination systems.

Transaction Blocks

BridgeWorX comes with several transaction blocks that can be configured to carry out data integration and interface management among automation systems, MES and ERP applications. One unique feature is the definition of user defined "Logic" and diagram "Flow." Transaction blocks are connected in visual "workflow diagrams" that can be configured for interaction with humans, machines or databases.

- OPC to Database
- Database to Database
- OPC to OPC
- Database to OPC
- Web Service Block
- Event Generation Block
- SQL Command Block
- Execution Delay Block
- Conditional Branch Block
- File Transfer Block
- .NET Custom Block
- Status Block



Transaction Blocks

Advanced Scheduling Support

The powerful BridgeWorX Scheduling Engine allows for the simultaneous execution of transactions. Transactions can be triggered on the following criteria:

- Operator commands
- Recurring time and date
- Real-time alarm or event
- Real-time OPC or SNMP data value
- Expressions or calculations
- Enterprise database value or query
- File attribute change
- Windows NT Event

Powerful Microsoft .NET Data-Mining and Transformation

BridgeWorX is designed from the ground up, based on Microsoft .NET technologies. Connecting to source and target systems is fast, efficient and easy to configure. ICONICS brings you the most advanced data integration and interface management tool available today, taking maximum advantage of Microsoft's most powerful technologies. BridgeWorX uses Microsoft .NET technology to move data from the source systems to target systems.

Enterprise Level Workflow and Business Logic

Integrating BridgeWorX with the GENESIS32™ product suite allows you to coordinate information between multiple plant-level systems. Coordinate important management systems with machines, and operator action, across a distributed network. BridgeWorX automates the execution of your business logic to quickly and easily distribute data from these multiple plant-level systems to the enterprise.

100 Foxborough Blvd. Foxborough, MA 02035 USA • E-mail: info@iconics.com Web: www.iconics.com
United States, Tel: 508 543 8600, Fax: 508 543 1503 • Australia, Tel: 61 297 273 411, Fax: 61 297 273 422
China, Tel: 86 130 684 86069 • Czech Republic, Tel: 420 377 183 420, Fax: 420 377 183 424
Europe BV, Tel: 31 252 228 588, Fax: 31 252 226 240 • France, Tel: 33 45 019 1180, Fax: 33 45 001 0870
Germany, Tel: 49 2241 16 508 0, Fax: 49 2241 16 508 12 • Hong Kong, Tel: 852 21 505 797
India, Tel: 91 22 67291029, Fax: 91 22 67291001 • Italy, Tel: 39 010 46 0626, Fax: 39 010 65 22 187
United Kingdom, Tel: 44 1384 246 700, Fax: 44 1384 246 701

© 2010 ICONICS, Inc. All rights reserved. Specifications are subject to change without notice. GENESIS64, GENESIS32, Pocket GENESIS, BizViz and their respective modules, OPC-To-The-Core, and Visualize Your Enterprise are trademarks of ICONICS, Inc. Other product and company names mentioned herein may be trademarks of their respective owners.