

BizViz ANALYTICS[™]

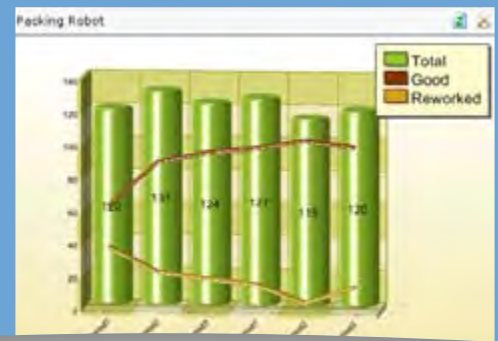
Real-Time Intelligence for Manufacturing Productivity



a suite of analytics solutions
that maximizes your operational efficiency



Visualize Your Enterprise[™]

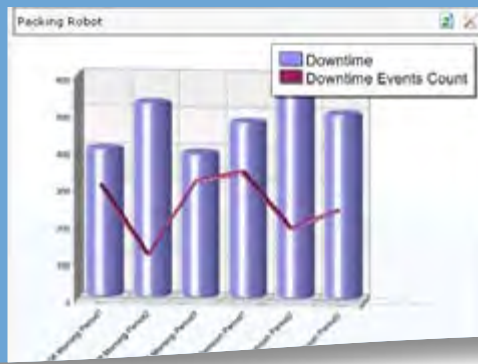


*“Make better
decisions faster
with real-time
information”*

THE BIZVIZ ANALYTICS SUITE

ICONICS empowers decision makers at all levels of the enterprise with real-time and accurate information to help them drive global operational efficiency and strengthen their competitive market advantage. Gain insight into your operations through real-time productivity, OEE and alarm data presented in an intuitive and intelligent manner. BizViz Analytics delivers Key Performance Indicators (KPIs) and manufacturing intelligence to the entire organization through powerful features such as:

- **Fast, efficient thin-client Web-based configuration** for managing your entire Analytics application from any Web-enabled browser. Create new assets, modify existing ones, manage shift schedules, assign downtime causes, administer user permissions and much more.
- **Configurable KPIs** for real-time performance tracking against set targets. The BizViz KPI library includes plant-specific calculations such as **OEE, TAKT Time, Lead Time, Productivity, Throughput** and **Right First Time**, and supports other continuous improvement initiatives such as: **Lean Manufacturing, Six Sigma** and **Demand Pull** process improvement initiatives.
- **Access to Machine and Operator Data**, gather data from virtually any data source as well as manually from the Operators with a bare minimum effort to ensure application adoption and data validity.
- **Flexible Reporting**, automated and on-demand to provide decision makers with real-time trends and performance statistics to identify opportunities for improvement, in a variety of different formats.
- **Powerful, intuitive Web-based user interface**, allows users to access Analytics information from any Web browser. The customizable nature of the navigation tree's hierarchy enables quick exploration of your assets in a way that mimics your production layout.
- **Real-time Alert notification and Instant Access to KPIs from Mobile devices**, provides instant information about process exceptions and tolerance deviations, enabling personnel to respond quickly before the problems impact business performance. Monitor OEE trends, update production targets, and acknowledge alarms all from your wireless device!
- **Alarm performance benchmarking** against industry standard best practices such as the EEMUA (Engineering Equipment and Materials Users' Association) to provide operators with a detailed understanding of their alarm system.
- **Role-based, secure dashboards** that integrate fully with the Microsoft Active Directory security architecture. All dashboards and views are tied into ICONICS' role-based security system allowing end users to see only the data that is relevant to them.
- **Flexible shift scheduling** that accommodates the most demanding plant schedules.



Drive improvements that impact your bottom line

THE BENEFITS OF BIZVIZ ANALYTICS

Production line supervisors, plant managers, and CEOs are provided with accurate, up-to-the-second, real-time information from all enterprise systems. The results are:

» Increased Profitability

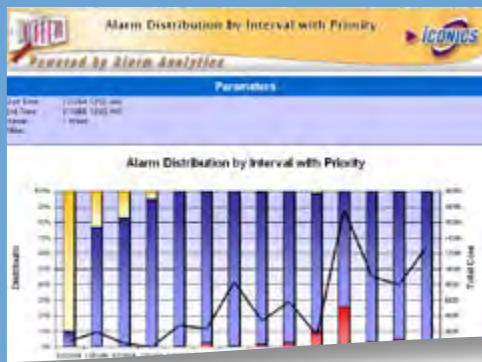
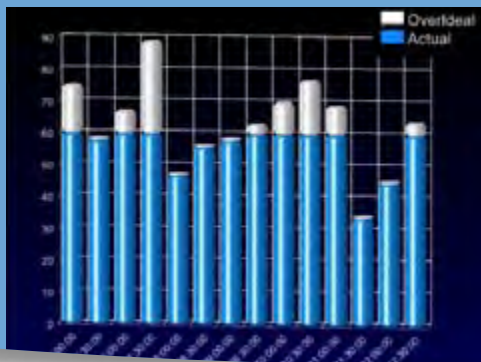
Business decision makers can take immediate action when real-time KPIs show deviation from target values. Simultaneous visibility into production rates, inventory levels and outstanding orders leads to inventory reduction and cost decrease.

» Streamlined Business Efficiency

Tracking multiple Lean Manufacturing and Six Sigma KPIs helps to identify areas for performance and efficiency improvement. Enhanced reports and root-cause analysis capabilities drive manufacturing process improvement.

» Strengthened Customer Loyalty

A single view of customer information, order status, and product location enables customer service to respond instantly to customer inquiries. Real-time visibility into the entire supply chain supports capable-to-promise and available-to-promise capabilities.



VERTICAL MARKETS

ICONICS products are currently used in a wide range of industries.

Aerospace & Defense
Automotive
Biotechnology
Building Automation
Chemical & Petrochemical
Consumer Packaged Goods
Financial
Food and Beverage
Government
Machine Builders
Metals & Mining
Oil & Gas
Pharmaceuticals
Power & Utilities
Pulp & Paper
Semiconductors
Water & Wastewater

Productivity Analytics

Visual OEE, KPIs and Analysis for Operational Excellence

Today's manufacturing environment demands information in real time. It is no longer sufficient to operate solely based on yesterday's data, or even data from the previous shift. BizViz Productivity Analytics™ provides powerful data mining technology to track real-time key performance indicators (KPIs) such as OEE, throughput, utilization, availability, yield, uptime, cycle time and quality. Its powerful thin-client Web Interface allows users to design, develop, and deploy dashboards to effectively visualize vast amounts of available manufacturing and business information at a glance.

By allowing users to drill into the root cause of downtime events, seemingly random data can be correlated into actionable intelligence. Operators can layer real-time views on top of historical or "ideal" performance data to drive operational performance to optimum levels. An intuitive Web-based navigation system allows users to traverse data efficiently, while the customizable navigation tree hierarchy allows exploration of assets in a way that mimics production layouts to view relevant data at any level of the enterprise.

Productivity Analytics helps operators, supervisors, and managers reduce cycle times, lower costs, identify improvement opportunities and get more out of available assets. Out-of-the-box charts and reports help line managers schedule preventive maintenance and identify under-utilized and over-utilized equipment. Shift schedules can easily be defined with an intuitive Microsoft Outlook-style interface. Properly maintained equipment results in less overall downtime, which, in turn, results in higher production efficiency.



Alarm Analytics

Alarm Management, Reporting and Analysis

BizViz Alarm Analytics™ provides rapid analysis, visualization, reporting and management of alarms, resulting in improved plant reliability, faster response times and deeper process understanding. Operators improve efficiency by uncovering alarm patterns, events and improved response times.

Alarm Analytics meets the OSHA PSM 1910.119 and EEMUA 191 specifications, giving users the highest level of compliance available today. Proper analysis and correlation of alarm information can reveal significant opportunities for improving current operations and mitigating abnormal situations. Alarm Analytics captures and analyzes the following:

- Alarm Distribution by Interval
- Alarm Tag Frequency
- Alarm Distribution by Priority
- Alarm Tag Chattering
- Cross-Correlation Analysis
- Alarm Distribution by Interval with Priority
- Alarms from Worst Actors by Interval
- Operator Changes by Interval
- Operator Response Time
- Standing Alarms at Time
- Standing Alarms by Interval
- Standing Alarms Duration



Business Intelligence for Manufacturing



INDUSTRY CHALLENGES

In today's world, facilities and industrial manufacturers are coping with ever increasing global competition while customers are demanding more innovative products at lower prices.

ICONICS Productivity Analytics and Alarm Analytics can provide invaluable access, analysis and correlation of manufacturing, process and business data, in real time, to provide the ability to operate as efficiently as possible.

Facilities and industrial manufacturers need solutions that provide powerful capabilities as well as the flexibility to be adapted, changed and expanded over time. These solutions must also be adaptable, changeable and expandable by the customer, without the need for outside help.

ICONICS can provide you with these solutions.



Founded in 1986, ICONICS is an independent software developer of award-winning, real-time visualization, data historians, automation intelligence and suite of analytics software solutions. ICONICS products are installed in 70% of the Fortune 500 companies around the world, helping customers be more profitable, agile, efficient and sustainable.

ICONICS is a long time Microsoft Gold Certified Partner and Winner of the very prestigious Microsoft Partner of the Year Award, providing advanced software for many end users and technology suppliers. ICONICS has over 250,000 applications installed in multiple industries worldwide.

ICONICS cultivates an international culture of innovation, creativity and excellence in product design, development, technical support, sales and service. World headquarters are located in Foxborough, Massachusetts, USA.

World Headquarters

100 Foxborough Blvd.
Foxborough, MA, USA, 02035
Tel: 508 543 8600
Email: us@iconics.com
Web: www.iconics.com

Czech Republic

Tel: 420 377 183 420
Email: czech@iconics.com

Italy

Tel: 39 010 46 0626
Email: italy@iconics.com

Germany

Tel: 49 2241 16 508 0
Email: germany@iconics.com

Netherlands

Tel: 31 252 228 588
Email: holland@iconics.com

France

Tel: 33 4 50 19 11 80
Email: france@iconics.com

UK

Tel: 44 1384 246 700
Email: uk@iconics.com

Australia

Tel: 61 2 9727 3411
Email: australia@iconics.com

China

Tel: 86 10 8494 2570
Email: china@iconics.com

India

Tel: 0091 22 67291029
Email: india@iconics.com



2012 PARTNER OF THE YEAR
Sustainability
Winner



Further information:
www.iconics.com



© 2012 ICONICS, Inc. All rights reserved. Specifications are subject to change without notice. BizViz and its respective modules, OPC-To-The-Core, OPC-UA-To-The-Core and Visualize Your Enterprise are trademarks of ICONICS Inc. Other product and company names mentioned herein may be trademarks of their respective owners.