



PortalWorX™

Product Brief for PortalWorX™ V9.2

April 2010



Visualization Dashboards for Real-Time, Business and Manufacturing Data

Looking for a collaboration platform to easily create and manage custom manufacturing and business intelligence portals and visualization dashboards that provide single sign-on and collaboration for optimization of key performance indicators (KPIs)? Look no further than **PortalWorX™**. Built on the standard Microsoft® Office SharePoint™ and Microsoft .NET technologies, PortalWorX provides everything you need to create a manufacturing or business intelligence portal for your real-time, historical plant and business information. PortalWorX requires virtually no administration, is easy to configure, and delivers data to those who need it, when they need it.

Main Features & Benefits

Customizable dashboard built with "Web Part" blocks designed for manufacturing

Data Charting Web Part: gorgeous real-time charts directly in your portal
Backup and restore portals using the Site Deployment Utility

Organize links, documents and alarms through Navigation Menu and Navigation Tree control Web Parts

A complete and transparent integration with Microsoft® SharePoint™ to reduce training costs and to improve reliability

An easy-to-use Administration Interface

Amazing built-in templates for complete portal customization

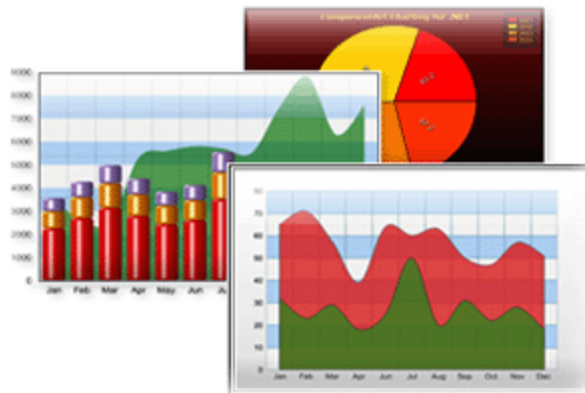
Provides Single Sign On services for all applications

Fully distributed architecture using Web services for scalability

Improves communication and collaboration between team members

Enables each user to create their own personalized views

Simple drag-and-drop configuration



The Ideal Tool for Manufacturing Intelligence

PortalWorX allows users to design, develop and deploy custom manufacturing and business intelligence portals and visualization dashboards. Users can design and build collaborative information sharing sites and content from the Web parts infrastructure, which could include real-time data from the plant floor in a graphical format, files on the server, data from the corporate ERP system, etc.

PortalWorX has built in Web services that enhance the user experience: from Single Sign On to HMI visualization over the Web.



The new **PortalWorX** interface is completely designed around user needs. It's now possible to install **PortalWorX** Web parts into an existing Microsoft® SharePoint™ Portal, manage WebHMI settings, Single Sign On credentials, and database connections. And it doesn't matter where you are; all you need is a Web browser!

Award-Winning Microsoft® SharePoint™ Platform



PortalWorX extends Microsoft's SharePoint™ platform (ASP.NET and Web services) by introducing a large number of specialized manufacturing intelligence Web parts. This foundation provides an excellent platform to add manufacturing-focused Web parts to build a completely customizable and secure portal. In fact thanks to the Windows® SharePoint™ Services platform, the content and layout can be easily personalized for individual users to present targeted information on appropriate topics. This delivers relevant data to those who need it, when they need it; helping end users make quicker decisions. Entire configurations can be saved and reused by individuals and teams across an organization.

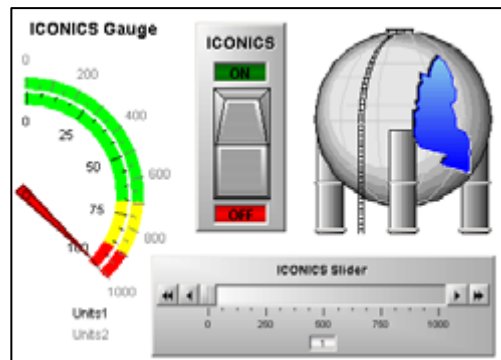
Moreover, the technology behind SharePoint™ Services allows complete control over user customization of the portal. Users can build their own page by placing the desired Web parts on the screen. Web parts can be moved to a new location with a simple drag-and-drop action, and can be closed or minimized to allow full control of the working area. In the end, Web parts are fully customizable, and they retain properties for each user. For security concerns, administrators can also restrict the customization level.

Data Charting and Other Web Parts

What is really important in a well-constructed portal is to present information to the users in the most efficient and intuitive way. **PortalWorX** Web parts have been developed with this precise idea in the mind. The result is a large number of nice looking and highly customizable Web parts:

With V9.1, PortalWorX now includes a NEW EarthWorX Web Part, based on the latest Microsoft Virtual Earth™ technology. PortalWorX now has new Geographical Information System (GIS) capabilities, where real-time KPIs and other metrics can be layered on Virtual Earth GIS maps. Also included as part of EarthWorX is new "Smart Pin" technology, which helps layer large numbers of KPIs onto the maps. PortalWorX also now has complete support for Windows SharePoint Services 3.0 (WSS) and Microsoft Office SharePoint Server (MOSS 2007). Support for the latest technology for WSS and MOSS helps boost productivity and provide a common user experience.

Gauges, sliders, vessels and **switches** are the ideal instruments to control automation processes via the portal. Every property is highly customizable: color, background, shape, width, length, captions, tooltips, appearance and obviously the signal source are just a few examples of how many features can satisfy almost all the user needs.



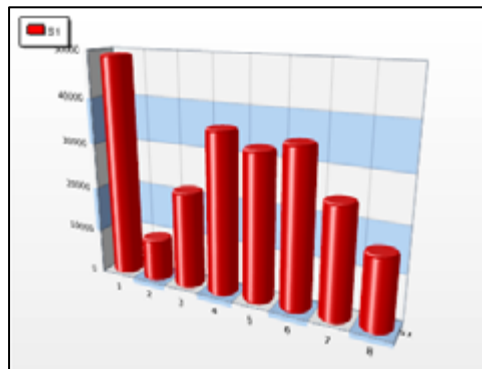
Almost every kind of portal needs a way to visualize and execute **Reports** and **Transactions**: Browsers, Execution Consoles, Managers and Viewers have been designed to be user friendly and give full control to the user for these useful elements of production and manufacturing.

KPI Viewer: Powerful Microsoft .NET technology allows the data-mining of virtually any corporate database. **PortalWorX** can integrate information from different data sources. Data sources such as Microsoft SQL Server, Microsoft Access, SAP, Oracle®, ODBC, OLEDB, MSDE, AspenTech, OSI PI, OPC Historical

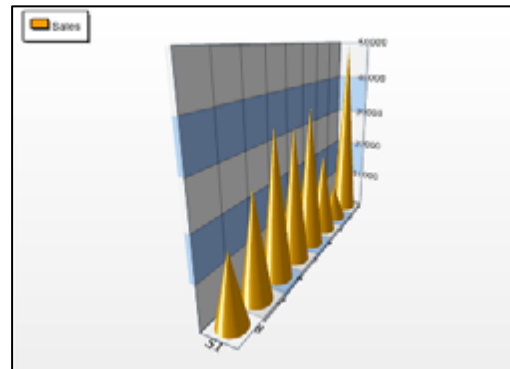
Data Access (HDA), OPC Alarm and Events (AE) and OPC real-time information can all be accessed. PortalWorX uses Web services technology to data-mine other Web services over the Internet or intranets. And the KPI Grid Web part can show all of this data within your Portal in an extremely intuitive fashion.

	CategoryID	CategoryName	ProductName	ProductSales
1	1	Beverages	Outback Lager	5468.4
2	4	Dairy Products	Gudbrandsdal	13062.6
3	5	Grains/Cereals	Gnocchi di non	32604
4	6	Meat/Poultry	Tourtière	3184.29
5	6	Meat/Poultry	Thüringer Rost	34755.92
6	8	Seafood	Boston Crab M	9814.73
7	6	Meat/Poultry	Alice Mutton	17604.6
8	1	Beverages	Chai	4887

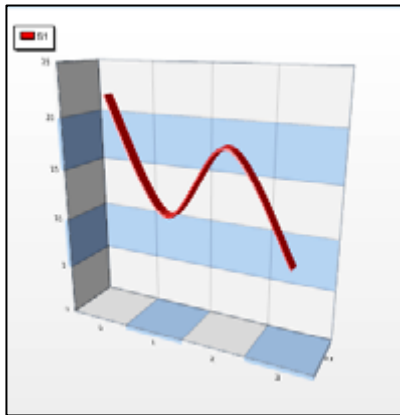
Data Charting: This is one of the most powerful web parts included with **PortalWorX**. You can now visualize your data in three-dimensional charts that can be customized with the *Data Charting Configurator*. Do you want a pie chart? Or a bubble chart? Do you want to change the color of the series of data? Do you need financial charts? Even combine chart types. No problem; the *Data Charting Configurator* lets you do all of this, and you can even rotate the plots or customize the axes. In other words you can create virtually any type of chart imaginable and add it to your portal. Below you can see some examples of what can be done with this amazing Web part!



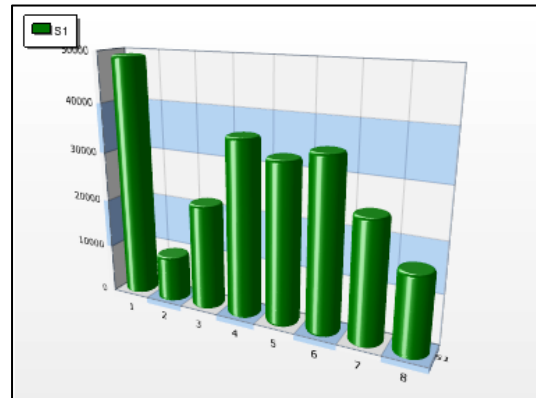
Amazing Charts to Visualize Your Data



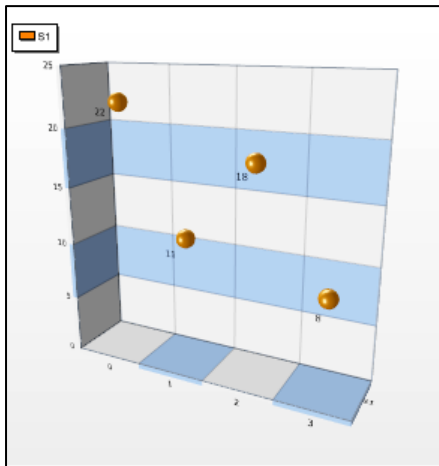
Customize the Rotation of Your Charts



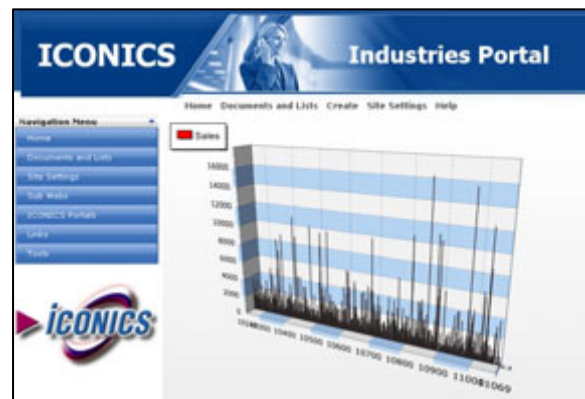
Dozens of Chart Types Available



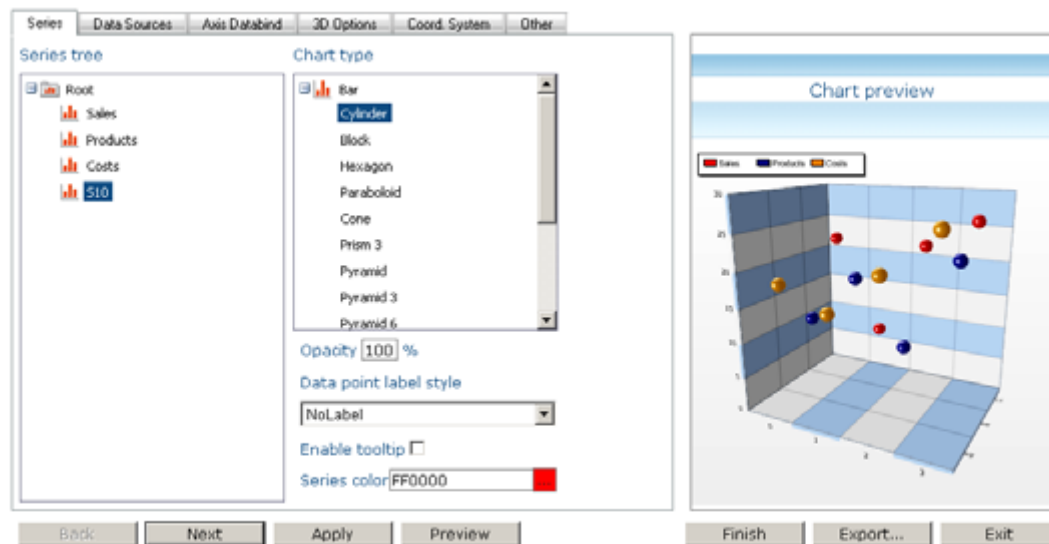
Brilliant Colors for Your 3D Charts



Discover New Ways to Show Your Data



Include Data Charting in Your Portal and Make It More Professional

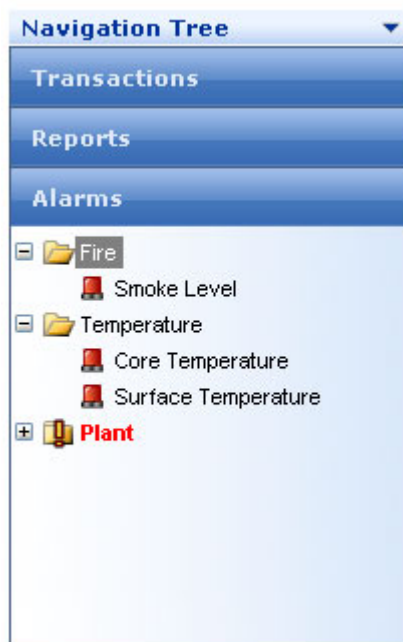


The Charting Configurator is Really Easy to Use to Customize the Look and Feel of Your Charts

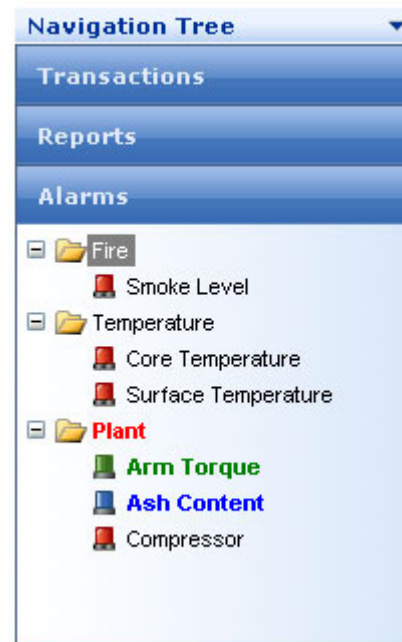
Navigation Menu: Organize your links, sub sites and documents with style! The Navigation Menu Web Part is completely customizable through an XML file.

Navigation Tree: Just like the **Navigation Menu** you can organize all your data with a modern tab browsing style. But unlike the Navigation Menu here you can organize and monitor your Reports, Transactions, and even your WebHMI files. But one of the biggest enhancements for version 9 is the Alarm Management feature: you can associate certain nodes of your tree to OPC Alarm & Event subscriptions. If something goes wrong you are immediately notified through visual feedback of a flashing icon in the appropriate branch of the tree.

To ensure you do not miss any notifications, the alarm feedback is propagated up through folders and subfolders. You'll get instant notification whenever anything happens around you, giving you the responsiveness you need to improve plant performance.



There is an Alarm in the Plant Folder



Flashing Icon Indicates What's Wrong

Built-in Microsoft® SharePoint™ Templates

PortalWorX comes with six amazing vertical market industry sample templates! When you extend your Web site with Microsoft® SharePoint™ you are asked to specify a template. Among the other default SharePoint templates now you can select from the **ICONICS** Templates, which have been designed to make your portals more elegant and professional-looking. Or instead you could choose to install the **ICONICS Examples** from the **PortalWorX** Administration Interface and you will have a complete set of pre-populated sample portals.



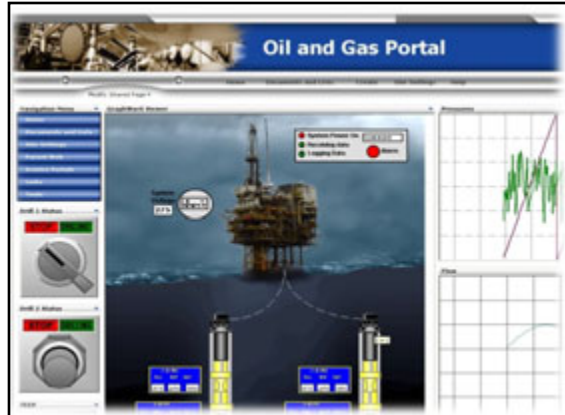
Automotive Portal



Building Controls Portal



Food and Pharmaceutical Portal



Oil and Gas Portal



Water and Wastewater Portal



ICONICS Home Portal

Deploy Your Portal to Remote Locations with Ease

Do you need to develop your portal in one location and then deploy it to another one? The **Site Deployment Utility** takes care of backing up the entire portal: Web Parts, Template, Shared Documents, configuration files, etc. Just launch the utility, pack your portals into a backup (.plx) file, bring the file with you and deploy it on the target site!

Integrate Information

PortalWorX allows you to integrate information coming from a variety of applications. Starting with graphics, trends, and alarms coming from ICONICS applications, users can add in reports supplied by reporting Web parts and access plant and enterprise databases through data-bridging. Moreover, users have full integration with their enterprise and plant applications in a single view.

Share All Types of Information

Users can share and collaborate with all types of information, including events, calendars, Web links, discussions, chats, announcements, real-time data, plant historical and business information, and much more. By creating smart places using Microsoft® SharePoint™ Services, users can collaborate on projects and share information and files.

No Custom Programming Required

PortalWorX provides a complete solution for creating and managing custom manufacturing and business intelligence portals and visualization dashboards. It requires no custom programming, as all content is built with a combination of Web parts, which include ICONICS' specific Web parts as well as standard Web parts supplied by Microsoft.

Scalable Architecture

PortalWorX is completely based on Microsoft .NET and SharePoint™ technologies, and is designed to scale from the simplest to the most demanding application. This architecture allows for scaling from a single computer up to Web farms, and is designed to run in distributed environments with multiple servers and different databases.

Native Support for 64-bit Web Servers

Information Technology is accelerating at a rapid rate and it is rare to find a 32-bit machine in a server room these days. Many competitive portal solutions will only run in "compatibility mode" on a 64-bit server, but PortalWorX leverages the true power of x64 computing by running its web application natively in 64-bit mode. Some of the benefits of running natively within a 64-bit web server environment include: a reduction in the number of servers required to service the same number of requests, greater scalability, fewer lost connections, improved I/O handling, reduced load on the IT staff, and an overall improved customer experience!

Security and Single Sign-On

The built in single sign-on functionality with PortalWorX provides storage and retrieval services for user credentials. All Web parts used within PortalWorX can leverage single sign-on to perform automatic logins to multiple applications. Credentials are stored with 256-bit Advanced Encryption Standard (AES) encryption. All sign-on communication to and from Web parts is encrypted for added security.

Cost Savings and Productivity

PortalWorX allows users to have customizable views of their manufacturing and enterprise information. Thus, there is no need to build and maintain different visualization applications. Being able to reuse Web parts and drop in off-the-shelf Web parts saves on development and deployment.

PortalWorX – Client Side Requirements

Microsoft Windows 7, Windows Vista, Windows XP, Windows 2000 Professional, or Windows 98
Microsoft Internet Explorer (IE) 6.0 or later

PortalWorX – Server Side Requirements

Microsoft Windows Server 2003 (x64* or x86) or Windows Server 2008 (x64* or x86) with latest service packs
Microsoft SQL Server 2008, SQL Server 2005, SQL Server 2008 Expression Edition, or SQL Server 2005 Express Edition with latest service packs
Microsoft Internet Explorer 6.0 or later
Windows SharePoint™ Services 2.0, Windows SharePoint Services 3.0, or Microsoft Office SharePoint Server 2007 with latest service packs
Internet Information Services (IIS) 6.0 or later
Dual or Quad core processor or greater
2 GB of RAM (4 GB recommended)

*Note that if you are deploying **PortalWorX** on a 64-bit server it is highly recommended that you use the corresponding 64-bit version of SQL Server and Windows SharePoint Services or Microsoft Office SharePoint Server.



Visualize Your Enterprise™

VISIT US AT WWW.ICONICS.COM

ICONICS World Headquarters

100 Foxborough Blvd.
Foxborough, MA 02035
Tel: 508 543 8600
Fax: 508 543 1503
Email: info@iconics.com

ICONICS Europe

Czech Republic

Tel: 420 37 718 3420
Fax: 420 37 718 3424
Email: czech@iconics.com

France

Tel: 33 45 019 1180
Fax: 33 45 001 0870
Email: france@iconics.com

Germany

Tel: 49 2241 16 508 0
Fax: 49 2241 16 508 12
Email: germany@iconics.com

Italy

Tel: 39 010 46 0626
Fax: 39 010 65 22 187
Email: italy@iconics.com

Netherlands

Tel: 31 252 228 588
Fax: 31 252 226 240
Email: holland@iconics.com

ICONICS Asia

Australia

Tel: 61 297 273 411
Fax: 61 297 273 422
Email: australia@iconics.com

China

Tel: 86 130 684 86069
Email: china@iconics.com

India

Tel: 91 22 67291029
Fax: 91 22 67291001
Email: india@iconics.com

ICONICS UK

United Kingdom

Tel: 44 1384 246 700
Fax: 44 1384 246 701
Email: info@iconics-uk.com

WHY CHOOSE ICONICS?

ICONICS, Inc. is a leading provider of award-winning enterprise Manufacturing intelligence and automation software solutions and implementation services. **ICONICS** solutions deliver real-time visibility into all enterprise operations and systems, helping companies to be more profitable, more agile and more efficient. **ICONICS** products have delivered value within over 250,000 installations worldwide and have been chosen by more than 70% of the Fortune 1000.



© 2010 ICONICS, Inc. All rights reserved. Specifications are subject to change without notice. BizViz, GENESIS64, GENESIS32, Hyper Historian and their respective modules, OPC-To-The-Core, OPC-UA-To-The-Core and Visualize Your Enterprise are trademarks of ICONICS Inc. Other product and company names mentioned herein may be trademarks of their respective owners.