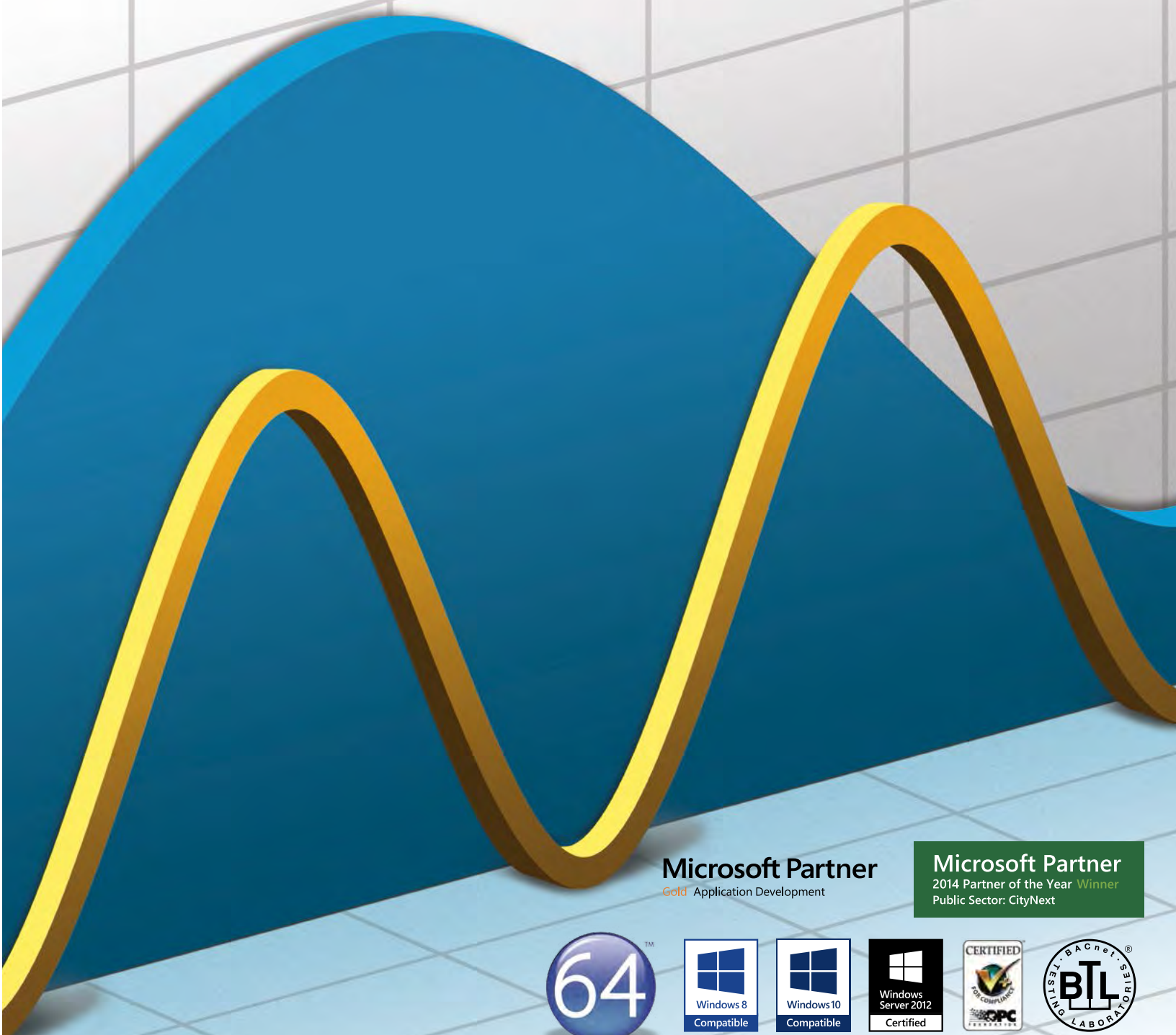




Hyper Historian™

High Speed, Reliable and Robust Plant Historian



Microsoft Partner
Gold Application Development

Microsoft Partner
2014 Partner of the Year Winner
Public Sector: CityNext



Advanced Big Data Plant Historian for Any Application

ICONICS' Hyper Historian™ is an advanced 64-bit high-speed, reliable and robust plant historian. Fast and accurate access to long term historical data is fundamental to staying competitive today. Designed for the most mission critical applications demanding the highest level of availability, Hyper Historian delivers unparalleled performance with very efficient use of computer resources. Hyper Historian leverages the latest Microsoft platforms, including Windows 8 and Microsoft Windows Server 2012, and includes tight integration with SQL Server. This technology makes Hyper Historian the best-in-class, real-time Plant Historian for any Microsoft 64-bit operating system.

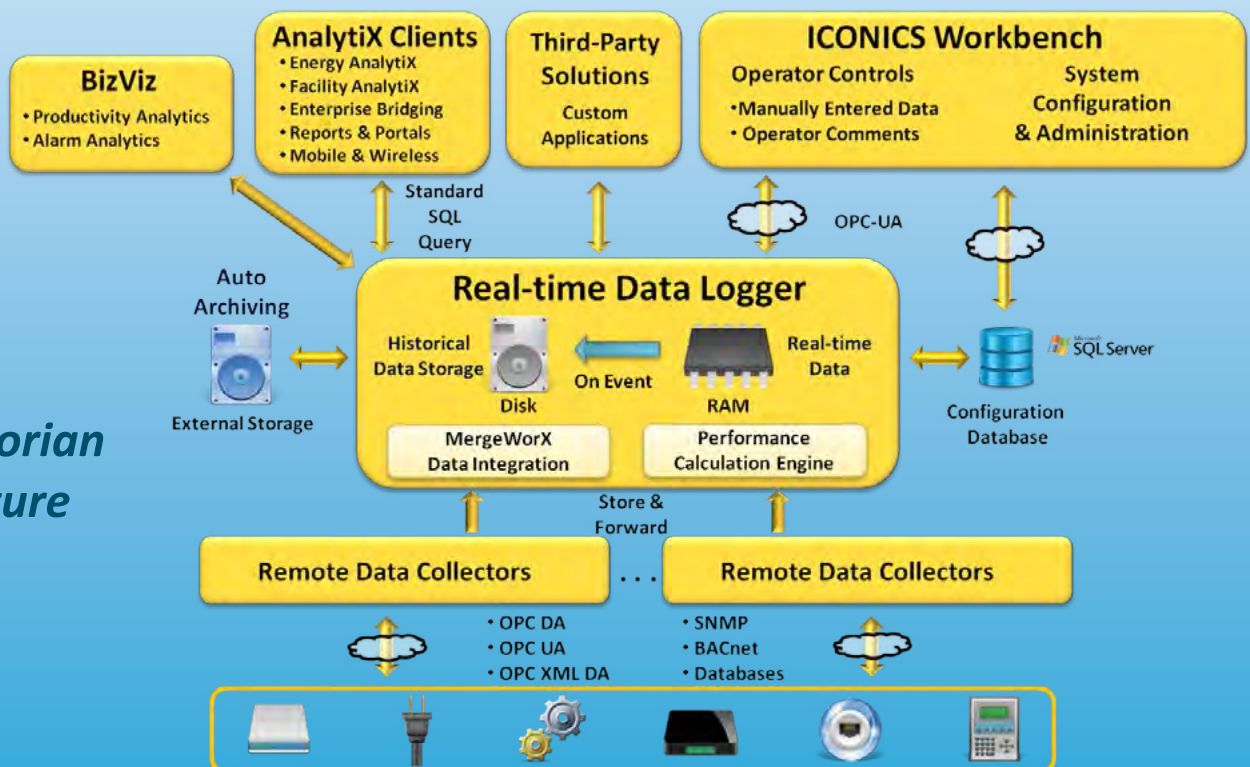


Data storage and retrieval is faster than traditional relational databases and other real-time historians. Combining a high compression, advanced Swinging Door algorithm, and designed from the ground up to take advantage of 64-bit hardware and software architectures, Hyper Historian can access more CPU power and memory than traditional 32-bit based historians, giving users the highest performance possible on all standard PC-based platforms.

Key Features and Benefits

- Designed from the ground up using 64-bit and .NET
- Robust, High-Performance and Scalable
- Performance Calculation Engine
- Industry Standard Data Connectivity
 - OPC-UA, OPC DA, OPC HDA
 - SNMP, BACnet & Databases
- MergeWorX™ Historical Data Integration
- Native Reporting Add-in for Microsoft® Excel®
- Web-enabled Configuration and Administration
- Unattended Data Archiving and Back-up
- 2D and 3D Real-time Charts
- Real-time and Historical Data Replay
- Multiple Remote Data Collectors
- Store and Forward Technology
- Integration with ICONICS BizViz™ Solutions
 - Reporting, Data Bridging
 - Dashboards and Portals
- Extensible SQL Query Engine
- Diagnostic Data Tracing with Event Logs
- Integrated Redundancy

Hyper Historian Architecture



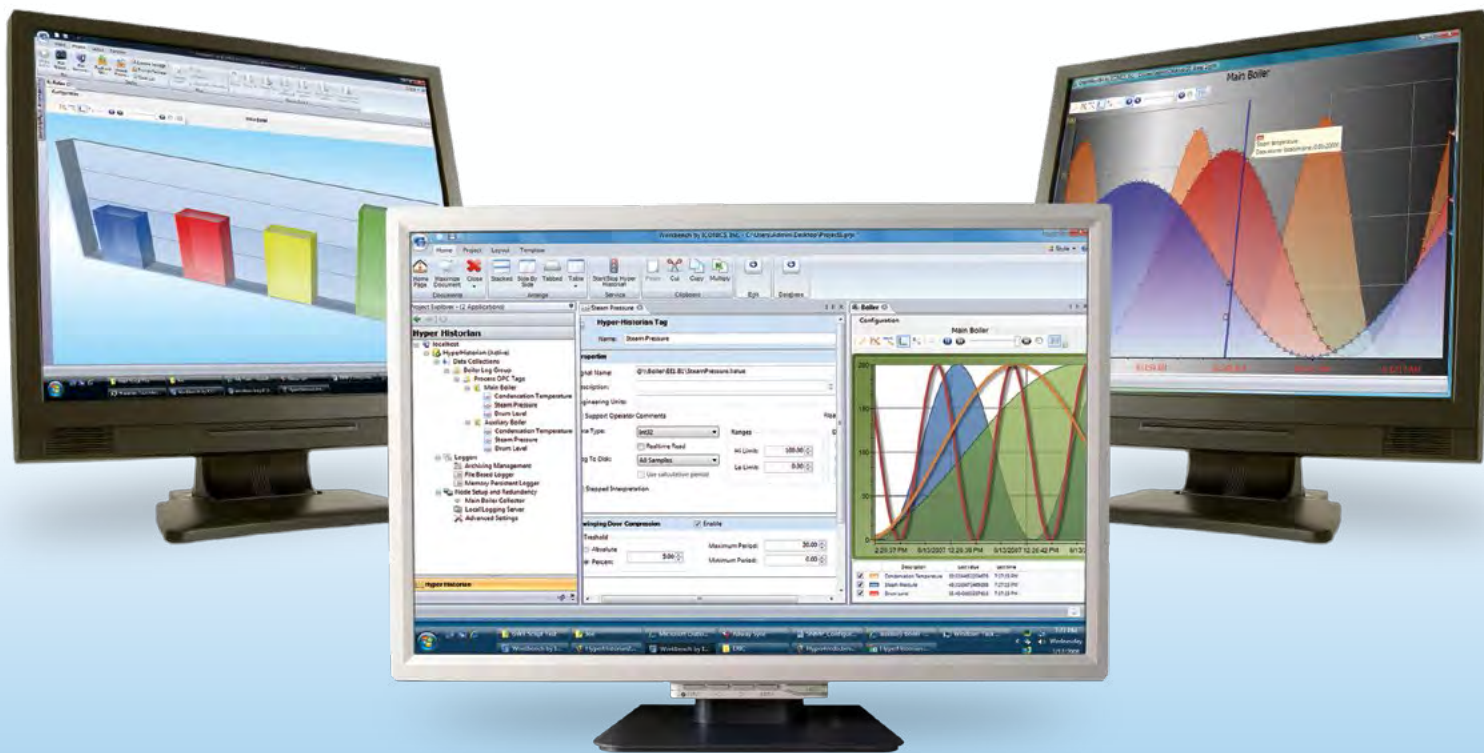


Unparalleled Performance with Unattended Data Archiving and Backup

Hyper Historian uses an advanced Swinging Door data compression algorithm for high speed data collection of up to 100,000 data events per second on reference hardware, for all your real-time, enterprise-wide information. With a unique automatic archiving feature, Hyper Historian allows for routine or triggered scheduling of data archives, freeing up disk space and backing up files for long term storage and retrieval.

Designed for the Most Demanding Applications

For mission critical applications that need uninterrupted access and collection of data, ICONICS' Hyper Historian has robust, built-in software redundancy. Automatic Store-and-Forward technology ensures data integrity, in the event there is a system upset or communications disruption.



Industry Standard Data Connectivity, Performance Calculations and Data Integration

Hyper Historian uses advanced data integration, providing unsurpassed connectivity to any device via OPC DA, OPC UA, OPC HDA, OPC XML, SNMP, BACnet or database values. Easily collect information from multiple plants, facilities and the enterprise. Data sources such as PLCs, I/O devices, HMI applications, and network devices can be collected and stored for reporting and analytics.

Hyper Historian's powerful Performance Calculation Engine allows users to configure complex calculations that can be triggered periodically or on any data change event, using flexible new date/time, mathematical, string and historical data retrieval functions for advanced analysis.

MergeWorX is a tool for automatic or manual insertion of data into Hyper Historian, to import historical or log data from databases, other historians, field devices and other equipment such as PLC's. This provides for high resolution recording from these devices and greatly increased reliability of capturing all data, even when network outages occur.

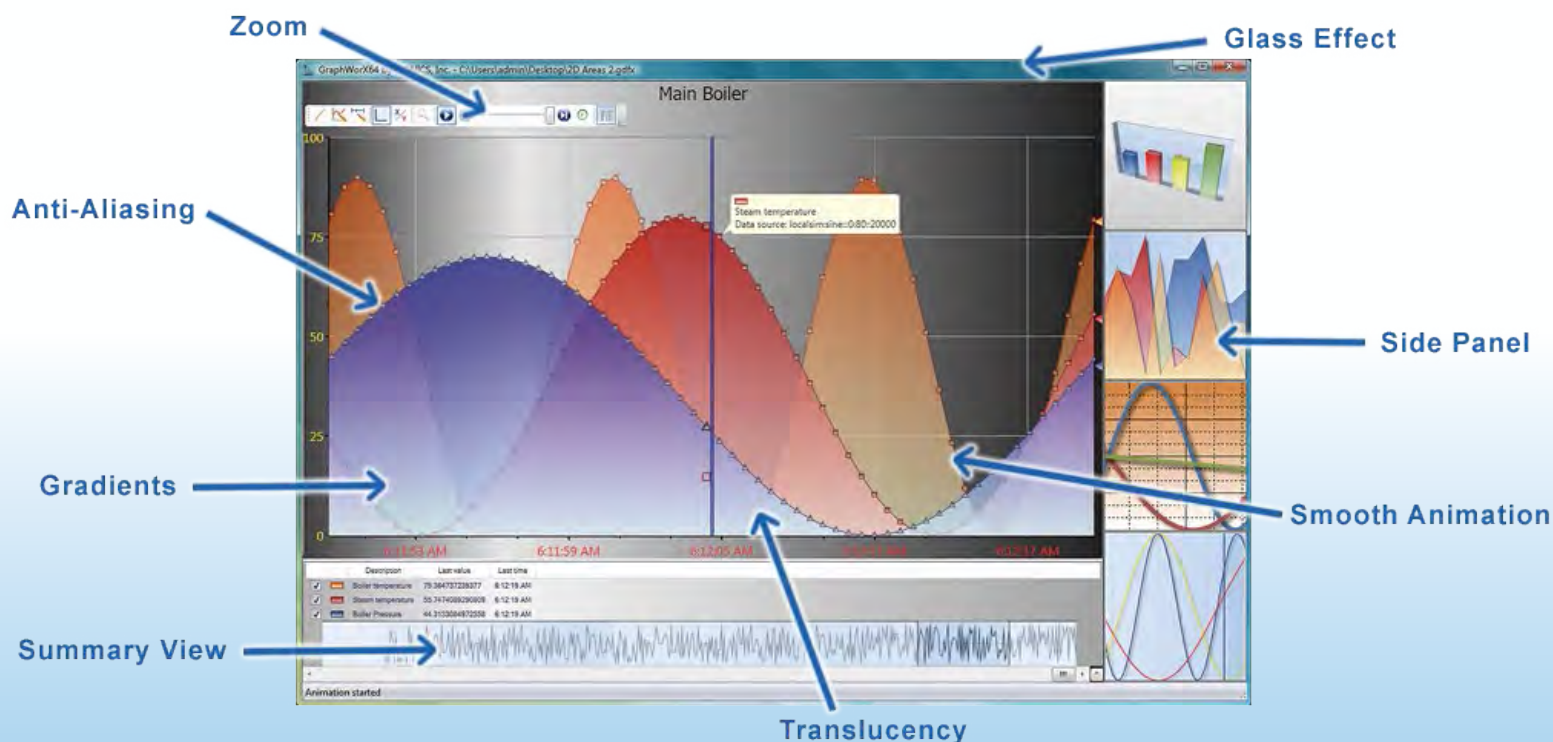
***“Productivity tools lower operational cost
and total cost of ownership”***

Belt On 57.66 On/Off 184.72 Boiler One 57.66 On/Off 14 21:24 Fan On 57.66 On/Off 33 Status Ok 20:04:36
Full 22.52 Status Ok 48.66 Light On 24.2 Tank Full 35:22 Alarm High 124.33 Belt Off 12:52 Valve Open 33.
us 20:04:36 Tank Full 8 Valve 124.33 Belt Off 52:52 Valve Open 04:45 Light On 20:5 Tank Full 122.52

Web-enabled Thin-client Configuration and Operational Management

The engineering cost of an automation project is typically 70 percent of the total project cost. The Workbench inside Hyper Historian features a thin client, optimistic concurrency design, acting as the central configuration environment and operator interface. This robust, secure workbench reduces engineering cost and speeds up the development time for any project.

The runtime operational interface allows for complete visualization of real-time and historical data with 2D and 3D charts. The Workbench's advanced configuration console performs complete service management and has integrated layout/project management and remote pack-and-go deployment capabilities.



Powerful Real-time and Historical Charts, Data Analysis and Reporting

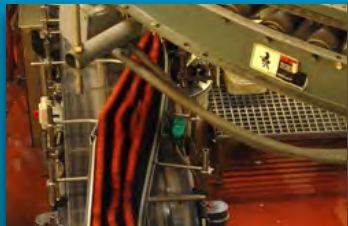
From the Workbench operators can add fully customizable 3D trends and charts that bring applications to life. Choose from the rich library of 2D and 3D charts such as X vs. Y, logarithmic, bar graph, strip chart recorder, circular and more to build clear and accurate representations of real-time and historical data. Use the intuitive ribbons and galleries to customize trends by adding color, gradients, smooth animation, translucency, glass effects, anti-aliasing and more to make data analysis clear and straightforward. Drag and drop data sources during runtime and view multiple trends simultaneously.

Data can also be viewed in tabular formats with the ability to enter operator comments as well as manage lab data and audit trails in accordance with 21 CFR Part 11 policies.

“Leverage the most advanced technology”

Hyper Historian includes an industry standard SQL Query Engine for reporting and bulk data editing, enabling tight integration with any SQL compatible database such as Microsoft SQL Server 2005/2008/2012, Oracle and any open database compatible client such as Microsoft Excel.

Hyper Historian can connect with all ICONICS BizViz™ and AnalytiX® applications to create best-in-class reporting, analysis, portal or data bridging applications.



***“Turn your
real-time data
into a
Competitive
Advantage”***

Industry Challenges

Today's plant operations are faced with the need to perform better and to be more competitive with fewer resources. For plant-level operations, today's systems need to connect to different infrastructures for data gathering and users need to analyze and visualize data in real time.

The demand to produce products faster or streamline operations is increasing across the globe. Having access to your plant data is key to staying competitive today.

ICONICS and its Hyper Historian enterprise-wide plant historian allow you to gain that competitive advantage, by organizing all your real-time information from across the enterprise.

Designed for Use in Many Industries

For more than 27 years, ICONICS has developed leading-edge software tools for automation, manufacturing, building control and information management customers. ICONICS has shipped over 300,000 products that are installed in plants spanning the globe for the following markets:

- Building Controls
- Petrochemicals
- Manufacturing Plants
- Food & Beverage
- Renewable Energy
- Utilities
- Airports
- Robotics
- Security Access
- Oil and Gas
- Pharmaceuticals
- Large Industrial Plants
- Water & Wastewater
- Government
- Machine Builders
- Automotive
- Entertainment
- Postal Systems

Global Support

The ICONICS SupportWorX™ Technical Support Services Plans are a key component of ICONICS' Global Support and Services Programs. SupportWorX Plans provide telephone and e-mail support from ICONICS sales channels and support centers around the globe. Expert assistance is available 24/7/365.



Founded in 1986, ICONICS is an award-winning independent software developer offering real-time visualization, HMI/SCADA, energy, fault detection, manufacturing intelligence, MES and a suite of analytics solutions for operational excellence. ICONICS solutions are installed in 70% of the Fortune 500 companies around the world, helping customers to be more profitable, agile and efficient, to improve quality and be more sustainable.

ICONICS is leading the way in cloud-based solutions with its HMI/SCADA, analytics, mobile and data historian to help its customers embrace the Internet of Things (IoT). ICONICS products are used in manufacturing, building automation, oil & gas, renewable energy, utilities, water/wastewater, pharmaceuticals, automotive and many other industries. ICONICS' advanced visualization, productivity, and sustainability solutions are built on its flagship products: GENESIS64™ HMI/SCADA, Hyper Historian™ plant historian, AnalytiX® solution suite and MobileHMI™ mobile apps. Delivering information anytime, anywhere, ICONICS' solutions scale from the smallest standalone embedded projects to the largest enterprise applications.

ICONICS promotes an international culture of innovation, creativity and excellence in product design, development, technical support, training, sales and consulting services for end users, systems integrators, OEMs and Channel Partners. ICONICS has over 300,000 applications installed in multiple industries worldwide.

World Headquarters

100 Foxborough Blvd.
Foxborough, MA, USA, 02035
Tel: 508 543 8600
Email: us@iconics.com
Web: www.iconics.com

European Headquarters

Netherlands
Tel: 31 252 228 588
Email: holland@iconics.com

Czech Republic

Tel: 420 377 183 420
Email: czech@iconics.com

Italy

Tel: 39 010 46 0626
Email: italy@iconics.com

Germany

Tel: 49 2241 16 508 0
Email: germany@iconics.com

France

Tel: 33 4 50 19 11 80
Email: france@iconics.com

United Kingdom

Tel: 44 1384 246 700
Email: uk@iconics.com

Australia

Tel: 61 2 9605 1333
Email: australia@iconics.com

China

Tel: 86 10 8494 2570
Email: china@iconics.com

India

Tel: 91 22 67291029
Email: india@iconics.com

Middle East

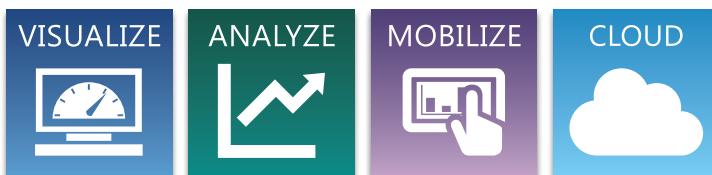
Tel: 966 540 881 264
Email: middleeast@iconics.com

Microsoft Partner

Gold Application Development

Microsoft Partner

2014 Partner of the Year Winner
Public Sector: CityNext



Further information:

www.iconics.com/hyperhistorian



© 2015 ICONICS, Inc. All rights reserved. Specifications are subject to change without notice. AnalytiX and its respective modules are registered trademarks of ICONICS, Inc. GENESIS64, GENESIS32, Hyper Historian, BizViz, PortalWorX, MobileHMI and their respective modules, OPC-to-the-Core, and Visualize Your Enterprise are trademarks of ICONICS, Inc. Other product and company names mentioned herein may be trademarks of their respective owners.