

PowerDRIVE-System

Easy integration, rapid format changes, fewer sources of error



High planning reliability
for worldwide export



Our plug and play solution for the global use of your machine

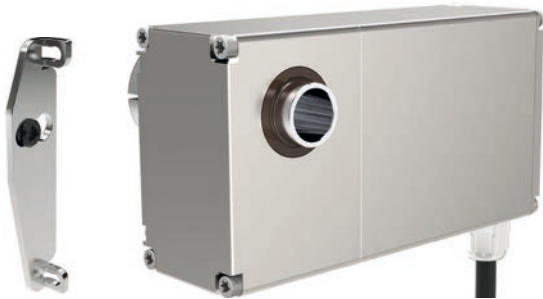
- **PowerDRIVE**
Fully automatic positioning drives reduce set-up times and costs on every change of format
- **PowerDRIVE-Box**
Decentral control unit for five drives enables maximum variety of interfaces
- **PowerDRIVE-Connect**
Ready-to-use hybrid cables minimise the cabling effort
- **PowerDRIVE-Lib**
Integrate positioning drives and control unit efficiently into the machine's control system with active condition monitoring for your Industry 4.0 activities
- **PowerDRIVE-Support-Tool**
Preconfigure and test the positioning system easily with the recommended software
- **Recipe software including support**
Stored formats enable machines to be modernised and set up quickly and without errors

PowerDRIVE-Positioning

Positioning drives for feed axes

Aluminium or stainless steel

GEL 6113



5 Nm
7 Nm
10 Nm

GEL 6110



1 Nm
2 Nm
3 Nm
5 Nm
7 Nm
10 Nm
15 Nm

GEL 6109



2 Nm
5 Nm

Bearing concept

The torque support equalises the spindle play in the axial and radial direction

- Captive bearing bush
- Universal design with 2 degrees of freedom
- High torques absorbed with low reaction forces



PowerDRIVE-Motion

For cyclic operation

GEL 6108



0.4 Nm

PowerDRIVE-Connect

Easy cabling

Cable outlet with M23 coupling



M23 connector with connection terminals



Cable outlet with M17 coupling



M17 connector with connection terminals



M17 connector



M17 connector with connection terminals



Cable outlet with connection terminals



Cable outlet



Connection terminals (single parts)



PowerDRIVE-Box

Decentral control for 5 PowerDRIVES



- Housing for
 - installation outside the switch cabinet: IP69K
 - top hat rail: IP20
- Interfaces
 - plug-in type and modular
 - independent provider

CANopen

EtherNet/IP

PROFIBUS

sercos
the automation bus

EtherCAT

PROFINET

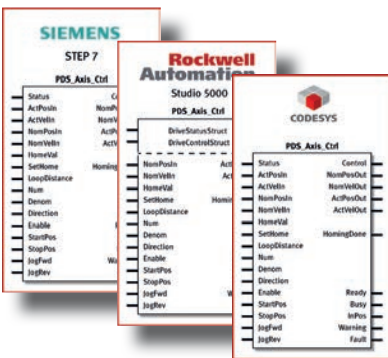
ETHERNET POWERLINK

PowerDRIVE-Lib

Integration without programming

Comprehensive function block library for:

- TIA-Portal / Step 7 / SCOUT
- Studio 5000 / RSLogix
- Automation Studio
- TwinCAT
- CODESYS 3.x / SoMachine V4



We would be happy to provide support

The experience we have gained through 50 years of motion control enables us to answer any questions you may have about our PowerDRIVE-System. Our specialists will also be happy to assist you personally on site if necessary. Talk to us.



Support Hotline
+49 208 9963-215
support@lenord.de

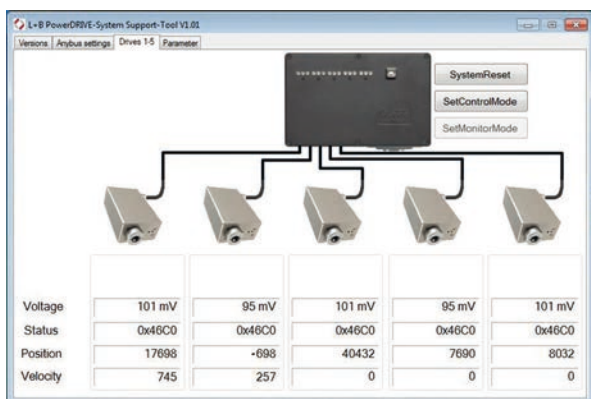
PowerDRIVE-Support-Tool

Our recommendation:

Configure and set up the complete PowerDRIVE-System on the PC

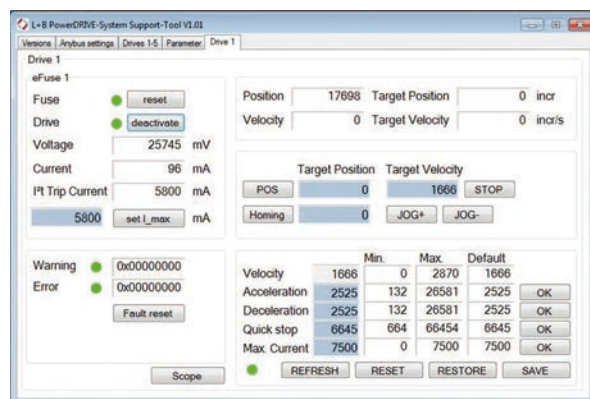
What do you need to have?

- PC with free USB port, current version of .Net framework
The application can be used without extensive installation
- Connection to USB interface of the PowerDRIVE-Box
- Graphic user interface with tool tips for ease of operation



Commissioning and setting up

- Functions of the PowerDRIVES are tested independently of the PLC connection and complex program routines
- Manual movement of PowerDRIVES
- Interface preparation for PLC connection
(Note-ID / address of the DHCP server, etc.)



Data exchange with the PC

- Component parameters are imported and exported independently of the interface to the PLC
- Parameters are stored in the drives
- Parameter sets are stored on the PC, e.g. for identical machines

In this way machines with identical operating parameters can be configured quickly and reliably.

Data exchange with the PLC

- Parameter setting for the PowerDRIVE-System directly in the PLC programming environment
- Simple parameter control:
motor current, speed, warnings, etc.
- Active condition monitoring supports your Industry 4.0 activities

All steps for setting up the axis can be executed directly in your machine's PLC or conveniently on the PC.

Lenord, Bauer & Co. GmbH
Dohlenstrasse 32
46145 Oberhausen, GERMANY
Tel.: +49 (0)208 9963-0
Fax: +49 (0)208 676292
info@lenord.de
www.lenord.com



A company in the *LENORD + BAUER* corporate group